

# APA ATCT

## Touch and Go Patterns

Presented to: CANRC

By: Lori Florian

Date: January 5, 2011



Federal Aviation  
Administration



# What are Touch and Go Aircraft?

- **When a student is learning to fly, they must learn how to properly taxi, take off and land the aircraft.**
- **This is done with their instructor to ensure that the student is operating safely.**
- **Provides the student the confidence needed to communicate with the tower and to practice take off's and landings through repetitive training.**
- **Is very rarely jet aircraft.**

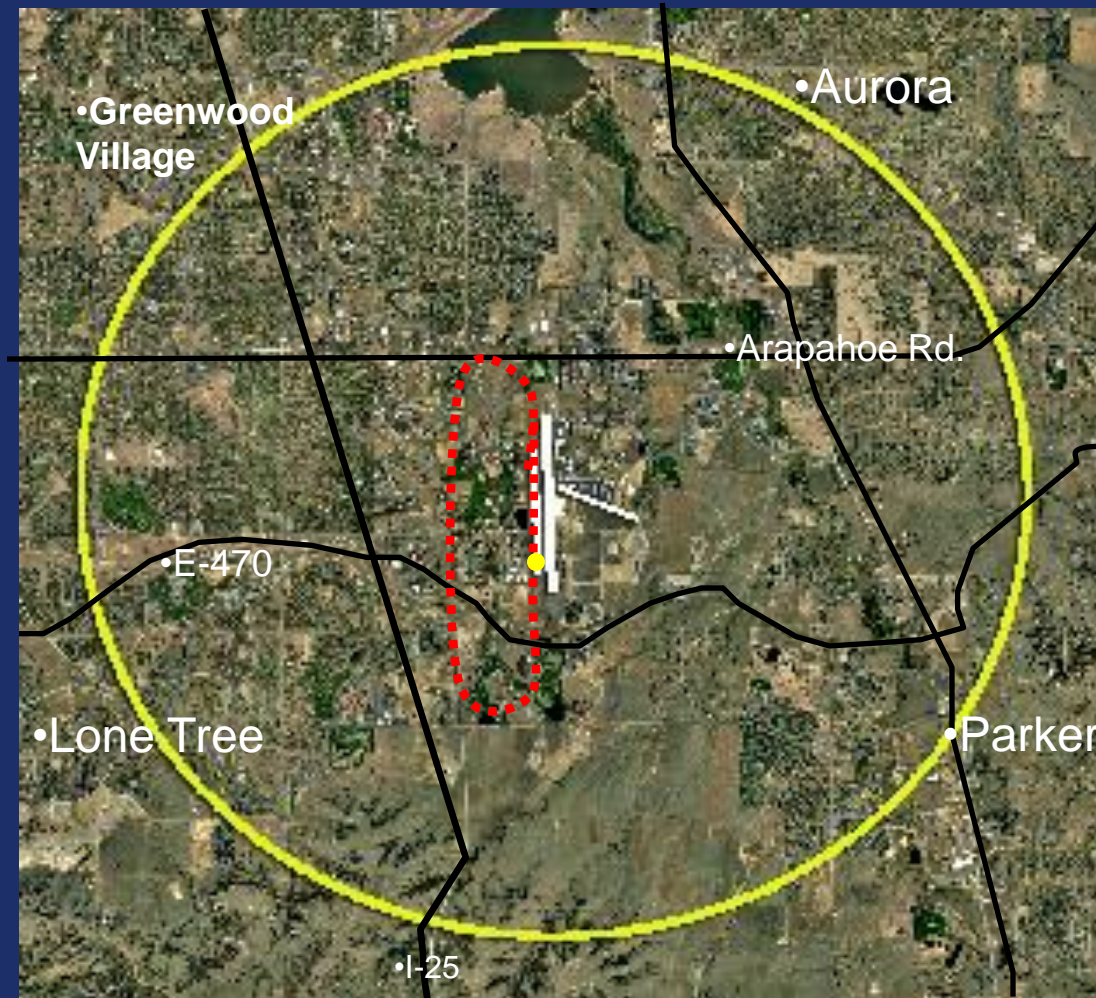


# APA Pattern Traffic

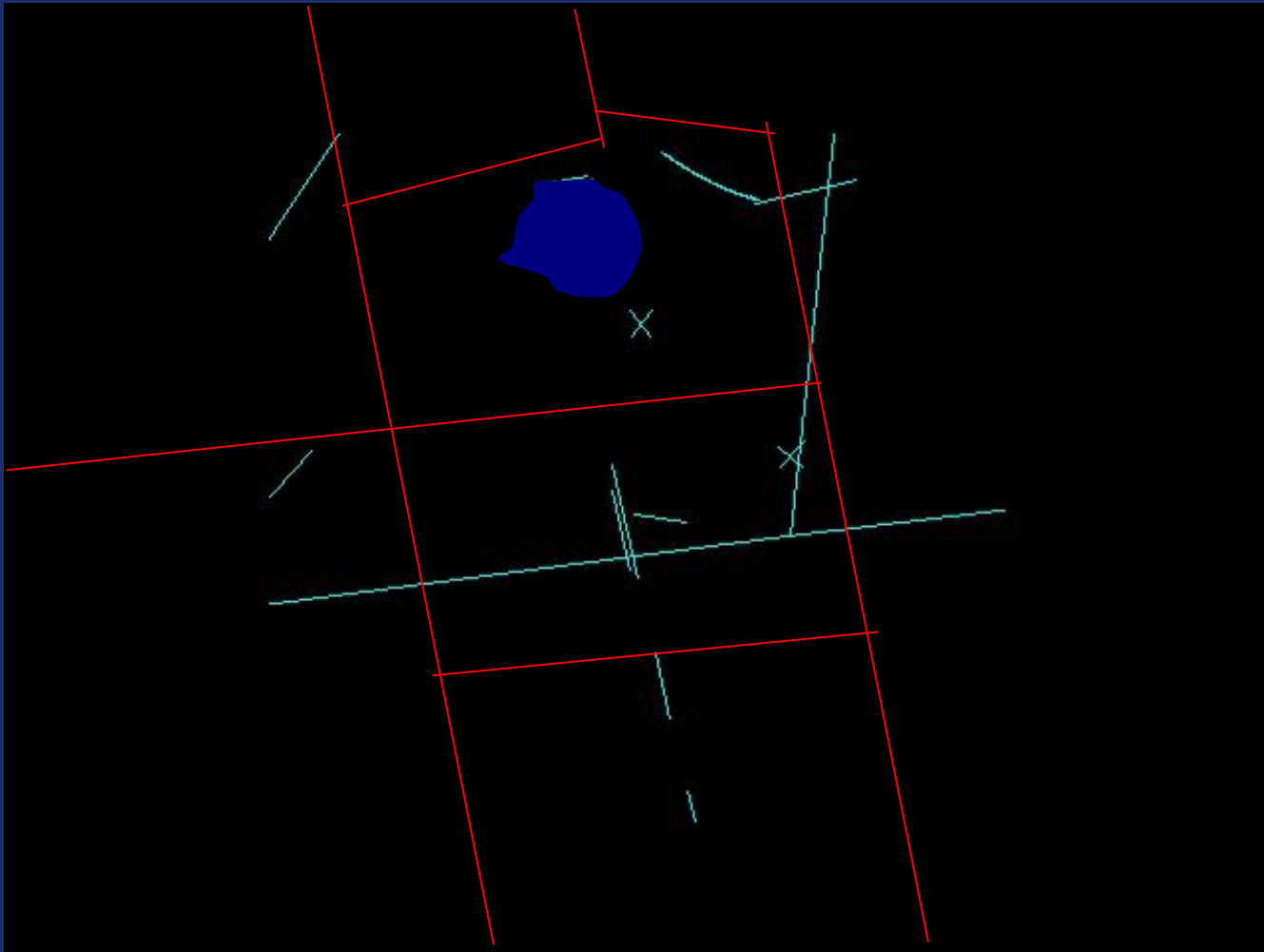
- The average in the Touch and Go Pattern is about 5 aircraft.
- The requirement for the controller is to keep the aircraft properly separated so that there is only one aircraft on the runway at one time.
- Touch and go traffic pattern can be extended due to the number of aircraft flying the pattern.



# APA Touch and Go Pattern



# Radar 12/11/10 @ 1100hrs for 1 hour



# Conclusion

- **There are many decisions the controller must make when operating the traffic pattern, one of them is running the safest operation possible.**

